

# Wind turbine generator voltage



## Wind turbine generator voltage



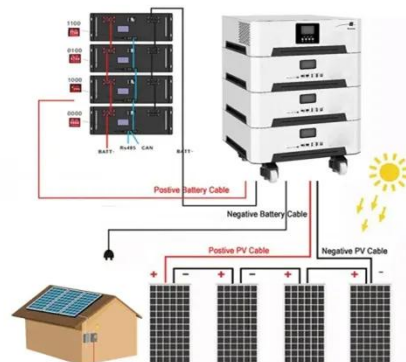
### Best Generators For Wind Power [Updated: February 2026]

Why We Recommend It: This model's key advantage lies in its advanced MPPT microprocessor, which optimally adjusts current and voltage, maximizing energy harvest across ...

[Get Price](#)

### How Much Voltage Is Produced By A Wind Turbine?

When the wind is strong enough, the rotational energy in the rotor is converted to electrical energy within the generator. The voltage of the electricity produced by the wind turbine is ...



[Get Price](#)



### What Voltage Do Typical Wind Turbines Generate?

Wind turbines typically generate electricity at a relatively low voltage, such as 690V or even lower, due to factors such as friction. The electrical power from the generator is typically 60 Hz, ...

[Get Price](#)

## Electrical works

The turbine generator voltage is normally classed as 'low', in other words below 1,000 V, and is often 690 V. Some larger turbines use a higher generator voltage, around 3 kV, but this is not high enough ...



[Get Price](#)



## Advanced Voltage Controls for a Wind Power Plant

IQ is controlled to compensate voltage drop along the lines in normal operation. Gm is activated only to overcome sudden overvoltage at the removal of the fault. Normal condition and transient condition ...

[Get Price](#)

## Unraveling Wind Generator Voltage: Insights from an Electrical Engineer

The output voltage at the generator's terminals is what we refer to as wind generator voltage. Typically, modern large-scale wind turbines produce an output voltage ranging from 540 to ...

[Get Price](#)



## Electricity generation from wind



Wind flows over the blades creating lift (similar to the effect on airplane wings), which causes the blades to turn. The blades are connected to a drive shaft that turns an electric generator, ...

[Get Price](#)

---

## What is the voltage and current of wind turbine?

A modern wind turbine is often equipped with a transformer stepping up the generator terminal voltage, usually a voltage below 1 kV (E.g. 575 or 690 V), to a medium voltage around 20-30 kV, for the local ...



[Get Price](#)

---

## General description of a wind turbine system The appropriate voltage



A modern wind turbine is often equipped with a transformer stepping up the generator terminal voltage, usually a voltage below 1 kV (E.g. 575 or 690 V), to a medium voltage around 20-30

[Get Price](#)

---

## How Do Wind Turbines Work?

This video highlights the basic principles

at work in wind turbines and illustrates how the various components work to capture and convert wind energy to electricity.

[Get Price](#)



---

## Contact Us

---

For catalog requests, pricing, or partnerships, please visit:  
<https://www.cannabiswow.es>

