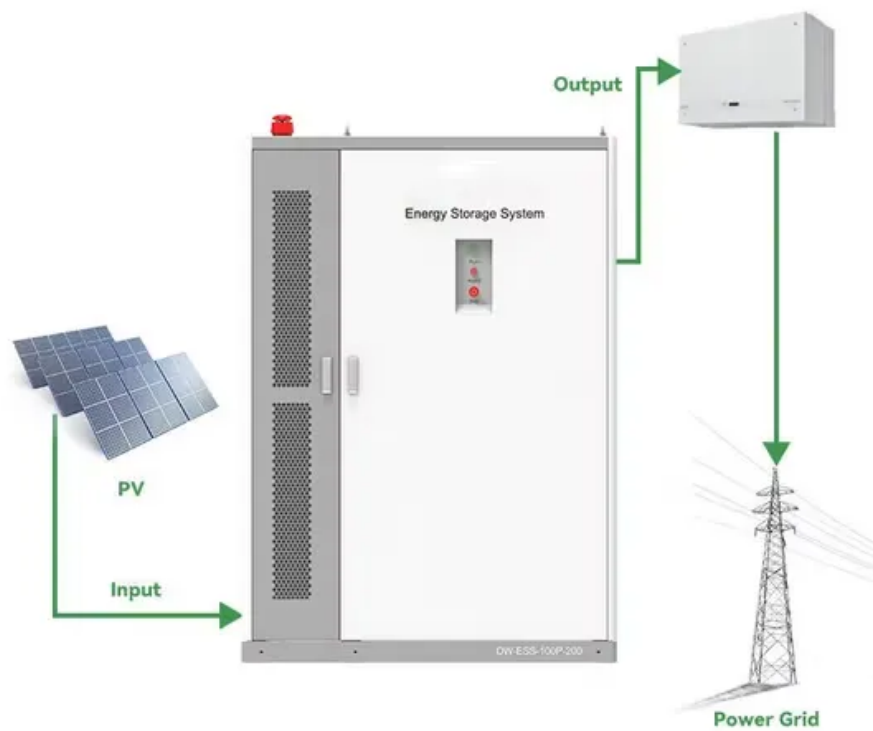


# What is the power generation capacity of container ships



## Overview

---

The IMO estimates shore power demand for containerships based on TEU (Twenty-foot Equivalent Unit) sizes, with results ranging from 0 kW for the smallest ships to a maximum of 1,950 kW for the largest vessels. The average power demand across categories is approximately 549 kW. On most modern general cargo ships, the standard configuration includes: Here's how they are used: During normal sea operations, only one generator is typically active. Explore the results below and sign up to access all premium tools, databases and expert support to perform your own. The Algeciras -class container ships have just under 24,000 TEU of capacity, and are powered by MAN 11G95ME engines rated at 101,300 SHP. I'm not sure if this 50,000 TEU ship's power would simply be double that of the Algeciras ships. The generator consists. Keep the lights on at sea: this deep, human-friendly guide explains how a ship's power generation system —diesel generators, alternators, AVR, switchboards, synchronizing and Power Management Systems (PMS), plus the fully independent emergency generator and emergency switchboard—works together for. In general, ships' operations require power lower than the installed generator capacity. However, when the generator is operated at a low load, its efficiency decreases.

## What is the power generation capacity of container ships

---



### Ship Power Generation Systems: From Diesel Generators to ...

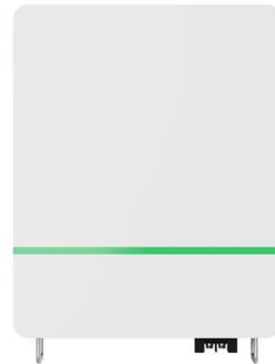
And unlike on land, there's no grid to lean on. Out at sea, the ship must generate, regulate, protect, and--when things go wrong-- restart its own electricity. This article is a complete, practical tour of ...

[Get Price](#)

---

### How is Power Generated and Supplied on a Ship?

And unlike on land, there's no grid to lean on. Out at sea, the ship must generate, regulate, protect, and--when things go wrong-- restart its own electricity. This article is a complete, practical tour of ...



[Get Price](#)

---



### (PDF) Prediction of the very- and ultra-large Container Ships

Cargo capacity expressed in 20-foot equivalent units (TEU) was identified as the main predictor of the electricity generation capacity based on a representative very-and ultra-large

[Get Price](#)

## ?How Many Generators Does a Ship Need? A Deep ...

100-200 kW (typical for small vessels or standby purposes) Up to 5-6 MW (used on large tankers, container ships, or cruise ships)

[Get Price](#)



## Prediction of the very

Cargo capacity expressed in 20-foot equivalent units (TEU) was identified as the main predictor of the electricity generation capacity based on a representative very- and ultra-large container ships database.

[Get Price](#)

## How Ships Get Power: Onboard Generators, Shore Power & Marine ...

This article will explore the principles of a ship power system, detailing how electricity is generated at sea, how vessels connect to power on land via shore power, and the critically important ...

[Get Price](#)



## Power requirements for a 50,000 TEU container ship

I understand that this may be incredibly

vague, but based on ...

[Get Price](#)



## Energy consumption and emission analysis for electric container ships

The main power source used in pure electric ships is energy storage batteries, achieving pollution-free and zero emissions. EVs can be divided into hybrid vessels, plug-in hybrid vessels, ...



[Get Price](#)

 TAX FREE    

**ENERGY STORAGE SYSTEM**

**Product Model**  
 HJ-ESS-215A(100KW/215KWh)  
 HJ-ESS-115A(50KW/115KWh)

**Dimensions**  
 1600\*1280\*2200mm  
 1600\*1200\*2000mm

**Rated Battery Capacity**  
 215KWH/115KWH

**Battery Cooling Method**  
 Air Cooled/Liquid Cooled



## How is Power Generated and Supplied on a Ship?

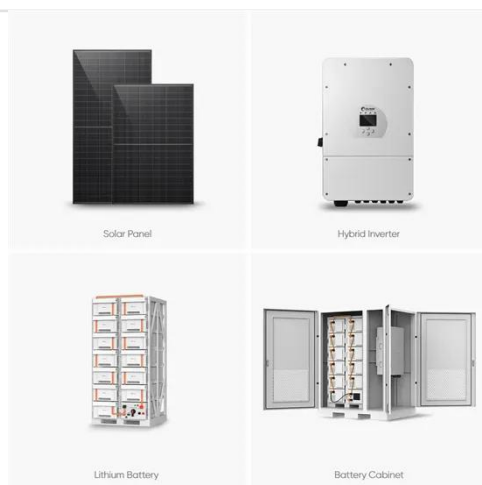
Just like a conventional city, the ship also requires all the basic amenities to sustain life on board; the chief among them is power or electricity. In this article we will learn as to how power is ...

[Get Price](#)

## Application of Generator Capacity Design Technique Considering the

We present a generator capacity optimization calculation method through generator capacity. The proposed strategy maximizes the space utilization and efficiency of the ship while ...

[Get Price](#)



## What is the average shore power demand of a container ship

The IMO estimates shore power demand for container ships based on TEU (Twenty-foot Equivalent Unit) sizes, with results ranging from 0 kW for the smallest ships to a maximum of 1,950 ...

[Get Price](#)

## Power requirements for a 50,000 TEU container ship

I understand that this may be incredibly vague, but based on current container ships, does anyone have an idea of how much power a 50,000 TEU (TwentyFoot Equivalent Unit) container ship ...

[Get Price](#)



## Contact Us

For catalog requests, pricing, or partnerships, please visit:

<https://www.cannabiswow.es>

