

# What does BMS battery mean



## What does BMS battery mean

---



### What does BMS (Battery Management System) mean and what is its ...

> What is a Battery Management System? BMS are electronic control circuits (PCB or module) that oversee various characteristics of the battery, including battery type, voltages, temperature, capacity, state of charge ...

[Get Price](#)

### What Is A BMS (Battery Management System)?

A Battery Management System (BMS) is an electronic control unit that monitors, manages, and protects a battery pack--especially those made of ...

[Get Price](#)



### What is a Battery Management System (BMS)? Essential Guide for

The battery management system (BMS) acts as the electronic brain of modern rechargeable batteries. It monitors and controls vital functions that optimize performance and safety. A BMS offers more ...

[Get Price](#)

## What Is a Battery Management System (BMS) and Why It Matters in ...

In modern lithium-ion and energy storage systems, the Battery Management System (BMS) plays a central role in ensuring safety, performance stability, and life cycle reliability.

[Get Price](#)



## What Does BMS Mean in Lithium Batteries?

At its core, BMS stands for Battery Management System. It's an essential component for lithium-ion batteries, which are commonly used in electric vehicles (EVs), energy storage systems (ESS), ...

[Get Price](#)

## Battery Management System (BMS) Detailed Explanation: Working ...

Battery Management System (BMS) is the "intelligent manager" of modern battery packs, widely used in fields such as electric vehicles, energy storage stations, and consumer electronics.

[Get Price](#)



## What Is a Battery Management



## System (BMS)?

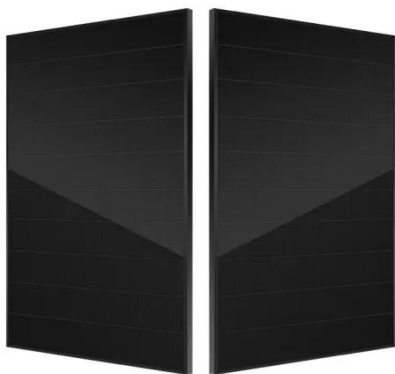
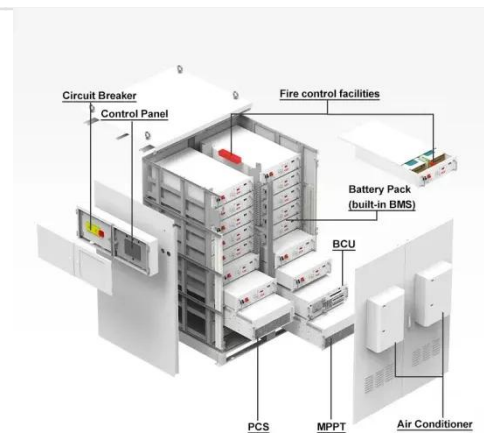
A Battery Management System (BMS) is an essential component in modern battery-powered applications, responsible for monitoring, protecting, and optimizing the performance of rechargeable batteries.

[Get Price](#)

## What Is A BMS (Battery Management System)?

That's where the Battery Management System (BMS) comes in. Often called the brain of the battery, the BMS ensures your batteries operate safely, efficiently, and for as long as possible.

[Get Price](#)



## What is a Battery Management System? Complete Guide to BMS ...

A Battery Management System (BMS) is an electronic control unit that monitors and manages rechargeable battery packs to ensure safe operation, optimal performance, and extended lifespan.

[Get Price](#)

## What is a Battery Management System (BMS)? - How it Works , Synopsys

Here, the term "battery" implies the entire pack; however, the monitoring and control functions are specifically applied to individual cells, or groups of cells called modules in the overall battery pack assembly.

[Get Price](#)



Modular design,  
unlimited combinations in parallel  
**BUILT-IN DUAL FIRE PROTECTION MODULE**



## BMS Explained: What It Is, How It Works, and Why Every Battery

A Battery Management System (BMS) is an electronic control unit that monitors, manages, and protects a battery pack--especially those made of lithium-ion or other rechargeable chemistries--from ...

[Get Price](#)

## Contact Us

For catalog requests, pricing, or partnerships, please visit:  
<https://www.cannabiswow.es>

