

The solar inverter will be shut down by others

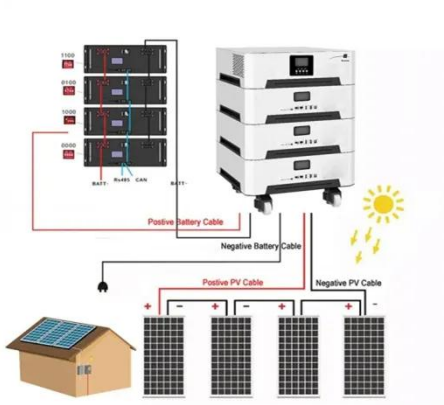


Overview

If an inverter keeps shutting off it is often for safety reasons. Other possible reasons are incorrect parameters, lack of power and damaged circuits. It produces AC that matches the grid waveform. “Islanding” is a pocket. In November 2024, several major news outlets, including Reuters, and The Times (UK), reported a vague but alarming incident: that solar power inverters in the United States were remotely disabled from China, raising fears of embedded “kill switches” and foreign control over U. In this guide we will explain why this happens and what you can do about it. Over the years, I've seen countless cases. Can your solar inverter be shut down remotely?

In late 2024, reports emerged that numerous Deye-branded inverters stopped working across the U., Canada, and beyond — all showing the same lockout message: “This inverter is not allowed in this region.”

The solar inverter will be shut down by others



5 Reasons Your Inverter Keeps Shutting Off

Solar inverters tied to the grid automatically shut down during a power failure for safety reasons. If there is a power outage in your area or flickers on and off, your inverter will shut down.

[Get Price](#)

How to Tell If Your Solar Inverter Is Failing

When your inverter starts failing, your solar production drops, monitoring stops updating, or your system shuts off entirely. Spotting inverter problems early protects your system, your home, and your long ...



[Get Price](#)



What Happens if Your Solar Inverter Fails?

Discover the consequences and solutions for solar inverter failures. Learn how to handle inverter issues and keep your solar panel system running smoothly.

[Get Price](#)

Inverter Shutting Down: Causes, Fixes & Prevention Tips

Discover why your inverter shutting down happens, common causes, practical fixes, and expert tips to prevent recurring shutdowns and keep your solar inverter running smoothly.

[Get Price](#)



Why Does My Inverter Keep Shutting Off?

If the solar energy generated by the solar panels is insufficient to charge the battery bank or allow the inverter to generate AC compliant with the grid input parameters, the inverter will shut ...

[Get Price](#)

Can Your Solar Inverter Be SHUT DOWN Remotely?

In this video, I explain how inverter cybersecurity became one of the biggest threats to solar independence.

[Get Price](#)

OEM service

Hot Colors:



Color can be customized
more questions just do not hesitate to contact us

LOGO Position: (Screen printing)



5 Reasons Your Inverter Keeps Shutting Off

Discover why your inverter shutting down happens, common causes,



practical fixes, and expert tips to prevent recurring shutdowns and keep your solar inverter running smoothly.

[Get Price](#)

Why does too much sun shut down a PV system?

In short, the sun may be shining at full strength, yet the solar power system doesn't perform optimally because the inverter repeatedly shuts down. What can be done about this? Fortunately, there are ...

[Get Price](#)



Stop Confusion: Why Inverters Cut Out When the Grid Fails

Lights go out. Your solar panels sit in the sun. Yet the inverter stops. This is not a bug. It is a safety feature called anti-islanding. It protects utility crews, your equipment, and the grid. Here is ...

[Get Price](#)

The November 2024 Inverter Shutdown Was Real

Following legal action by Sol-Ark to enforce its exclusive U.S. distribution

agreement, Deye reportedly issued a remote shutdown command for all of its inverters operating in regions not ...

[Get Price](#)



Contact Us

For catalog requests, pricing, or partnerships, please visit:
<https://www.cannabiswow.es>

