

Skyworth photovoltaic panel U-shaped clamp installation



Skyworth photovoltaic panel U-shaped clamp installation



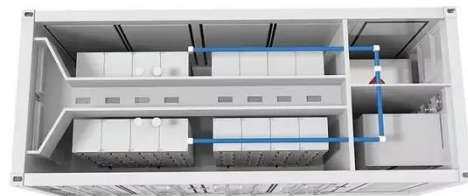
How are Solar Panel Fasten End Clamp U Bolts and Clamps with ...

A solar panel clamp is a specialized fastener, typically made of aluminum or steel, used to securely lock photovoltaic modules onto mounting rails. These ess

[Get Price](#)

Three installation processes for the U-shaped Mid and End Solar

A solar panel clamp is a specialized fastener, typically made of aluminum or steel, used to securely lock photovoltaic modules onto mounting rails. These ess



[Get Price](#)



Skyworth photovoltaic panel U-shaped clamp installation

Mounting Solar Modules and Estimating Parts Estimating the number and size of rails, mid and end clamps, L-feet, or standoffs for your solar installation could be troublesome. This brief introduction ...

[Get Price](#)

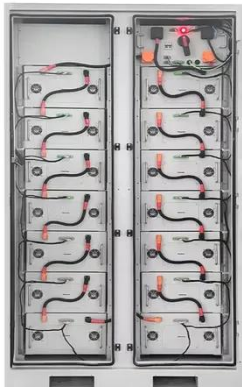
Mounting System-SKYWORTH

Experience seamless energy management with Skyworth Cloud. Monitor and optimize every aspect of your system with detailed views and settings. Perform self-checks to ensure optimal performance.



[Get Price](#)

To Strive forward No Energy Waste



- ✓ All in one
- ✓ 100~215kWh High-capacity
- ✓ Intelligent Integration

How to install the Skyworth photovoltaic panel rack

The brackets holding the solar panel to the surface; The actuator that lifts the solar panel (often contains the computer component) The rotation between the frames allows

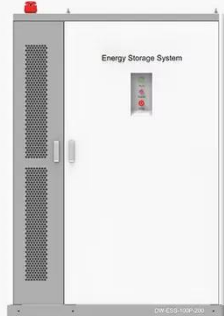
[Get Price](#)





How to install U-shaped accessories for photovoltaic panels

This is because most solar panel systems have no moving parts; as long as they're receiving sunlight and the products aren't faulty, they will be a reliable source of

[Get Price](#)

◆ PRODUCT INFORMATION ◆



-  BATTERY CAPACITY
50kWh~500kWh
-  DC VOLTAGE RANGE
400V~1000V
-  DEGREE OF PROTECTION
IP54
-  OPERATING TEMPERATURE RANGE
-10~50°C

Skyworth Photovoltaic Panel Clamp Tutorial

power output of a photovoltaic solar cell



is given in watts, and is equal to the product of voltage times the current with the average power output of a typical photovoltaic solar cell being around 2 watts, so to ...

[Get Price](#)

How to Use Solar Mount End Clamp and Mid Clamp Accessories

When installing a photovoltaic (PV) system, the proper selection and use of solar mount end clamp and mid clamp accessories are essential for maintaining the structural integrity and ...

[Get Price](#)



Residential PV-SKYWORTH

Seamless rooftop solar installation, hassle-free. Reduce grid reliance with optimized self-use. Track solar performance anytime, anywhere.

[Get Price](#)

Solar Clamp Installation Process , Secure Your Solar Panels Right

Discover how solar panel clamps are

installed for rooftop PV systems! ? This short video demonstrates the real-world process of securing solar panels using

[Get Price](#)



Contact Us

For catalog requests, pricing, or partnerships, please visit:
<https://www.cannabiswow.es>

