

Safety measures for micro inverters



Overview

These areas are crucial for ensuring that microinverters perform reliably. These include electrical protection, thermal management, and structural design. Intelligent monitoring is also essential. Adherence to certification standards is. An inverter is a critical component in converting stored energy into usable power for various appliances and tools. Low-voltage parallel operation for higher safety. It is difficult to. The scope of the guideline deals only with the installation of inverter-based micro generation facilities, 10kW or smaller. This equipment generates, uses, and can radiate radio frequency energy and, if not installed and used in accordance with the instructions, may cause harmful interference to radio.

Safety measures for micro inverters



Safety First: How Micro-Inverters Reduce the Risk of Fire and

This article delves into how Envertech micro-inverters contribute to a safer solar energy system, detailing how micro-inverters mitigate risks, what makes them safer than traditional string ...

[Get Price](#)

Enhancing PV Safety, Performance With Parallel Microinverter Tech

Learn how parallel microinverters overcome the limitations of string inverters in terms of safety, performance, and reliability, with support for multiple installation orientations, lower operating ...

[Get Price](#)



Safety and Reliability Design of Microinverters

Discover how microinverters improve solar PV system safety and reliability through innovative design features and operational advantages.

[Get Price](#)

IQ8, IQ8+, IQ8M, IQ8A, and IQ8H Microinverters

To reduce the risk of electric shock and to ensure the safe installation and operation of the IQ8 Series Microinverters System, the following safety symbols appear throughout this document to indicate ...



[Get Price](#)



manual microinverter

Microinverter System Introduction
 03-05Microinverter System
 InstallationTroubleshootingImportant
 Safety InstructionsSafety
 InstructionsRadio Interference
 StatementMicroinverters Maximize PV
 Energy ProductionSimple to
 InstallMicroinverter System
 InstallationAdditional Installation
 componentsRequired Parts and Tools
 from youTroubleshootingStatus
 Indications and Error
 ReportingTroubleshooting a non-
 operating MicroinverterTo troubleshoot a
 non-operating Microinverter, Follow the
 steps below in order:Technical
 DataMicroinverters Maximize PV Energy
 Production More Reliable than
 Centralized or String Inverters Simple to
 Install Microinverter IntroductionSee
 more on fuji-solar Missing: Safety
 measuresMust include: Safety
 measuresEnphase[PDF]

IQ8, IQ8+, IQ8M, IQ8A, and IQ8H Microinverters -

Enphase

To reduce the risk of electric shock and to ensure the safe installation and operation of the IQ8 Series Microinverters System, the following safety symbols appear throughout this document to indicate ...

[Get Price](#)

Micro Inverters 101: Your Top 10 Questions Answered , Bonnen

They also feature automatic safety mode functions that activate when issues such as ground faults or grid disconnection are detected. Evaluate available safety mechanisms and ...



[Get Price](#)



9 Essential Precautions For Safe Inverter Installation & Use -- EASUN

By properly sizing, ventilating, and securing your inverter, grounding it correctly, and maintaining all components regularly, you can prevent the most common issues and hazards ...

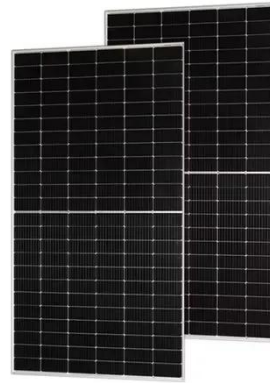
[Get Price](#)

Safety measures for microinverters

Learn how microinverters improve safety, making solar installations safer

by reducing high-voltage risk, enabling rapid shutdown, and improving fire safety compared to traditional string inverters.

[Get Price](#)



How Microinverters Improve Safety & Prevent Solar System Fires

Learn how microinverters improve safety, making solar installations safer by reducing high-voltage risk, enabling rapid shutdown, and improving fire safety compared to traditional string inverters.

[Get Price](#)

manual microinverter

For the purpose of the safety information of this manual, a "qualified person" is someone who is familiar with requirements for safety, refrigeration system and EMC and is authorized to energize, ground, ...

[Get Price](#)



Electrical Guidelines for Inverter-Based Micro-Generating Facility



This guideline is intended to simplify these and provide basic safety advice to home, farm and business owners who are considering the installation of Inverter-Based Micro generation systems.

[Get Price](#)

Contact Us

For catalog requests, pricing, or partnerships, please visit:
<https://www.cannabiswow.es>

