

Photovoltaic panels horizontal installation plan on the east and west slopes



RS485
Communication between battery and inverters
Baud rate:9600bps

RS485 Interface
Communication between parallel packs or BMS and PC
Baud rate:9600bps



Overview

By orienting modules along an east-west axis, these layouts smooth energy production throughout the day, maximize land use, and better align with real-world consumption patterns. With the right design and simulation solutions, east-west systems don't just compete — they outperform. While. Which solar panel orientation and tilt is best for your residential, commercial or utility-scale plant?

The renewable energy sector, within the energy industry, is by nature in constant innovation and evolution. As we evaluated in 5 of the best developments from 2020, now we can see that those. When your two best options are east or west, which should you choose?

During the course of a day, the sun passes through the sky in an arc that varies throughout the year due to the earth's orbit (see top image). As a rule of thumb, an ideal roof slope for a solar array equates to the.

Photovoltaic panels horizontal installation plan on the east and west



Design Considerations , NAHB

Southeast and Southwest orientations can still work, and if there's enough sun exposure on the roof, East- and West-facing roofs can also produce plenty of electricity. In addition, a flat roof can increase ...

[Get Price](#)

Orientation of solar panels

If you want to make the most of your solar installation, you should choose the proper orientation and tilt for PV panels. Our guide will help you do just that.

[Get Price](#)



 LFP 12V 100Ah



Why east-west orientation is a smarter bet for modern PV design

Discover the advantages of east-west solar layouts for modern PV design. Learn how to optimize energy capture, maximize site utilization, and reduce costs.

[Get Price](#)

Solar Panel Orientation: Everything You Need to Know

To determine the best orientation for your solar panels, you must take into account key factors, which include the direction, angle, and efficiency of the panels. Direction refers to the ...

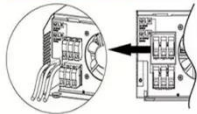
[Get Price](#)



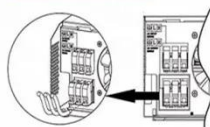
Parallel (Parallel operation up to 6 unit (only with battery connected))



AC input wires



AC output wires



Solar panel orientation: How using East-West structures ...

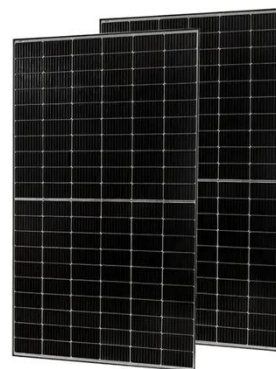
In today's blog post, we wanted to address how the orientation of structures and the tilt of a solar panel may affect productivity and the profitability of a plant.

[Get Price](#)

Solar Panel Direction & Orientation: 2025 Complete Guide

East or west-facing panels generate 75-85% of optimal output, and north-facing panels produce only 45-60% depending on latitude. The difference between optimal and poor orientation ...

[Get Price](#)



Solar Panel Placement: Best Direction & Orientation Guide

Discover the optimal solar panel



direction, placement & orientation to maximize energy efficiency. Boost savings with expert tips for an ideal setup!

[Get Price](#)

East to west - The optimal tilt angle and orientation of photovoltaic

This paper evaluates the trade-off between annual energy losses and possible electricity generation cost reductions through adapting PV installation angles for the current electricity system ...

[Get Price](#)



What's the Best Angle for Solar Panels? , EnergySage

Below, we'll get into the finer details of the ideal direction and angle for solar panels, how it varies depending on where you live, and what it takes to truly optimize your panels' electricity output.

...

[Get Price](#)

Solar panels: East-facing or west-facing roof?

So, in essence, the answer is that you should try to put your panels on the 'sunnier' side of the roof in terms of weather: if you have cloudy mornings more often, the west-facing roof, and if

...

[Get Price](#)



Contact Us

For catalog requests, pricing, or partnerships, please visit:
<https://www.cannabiswow.es>

