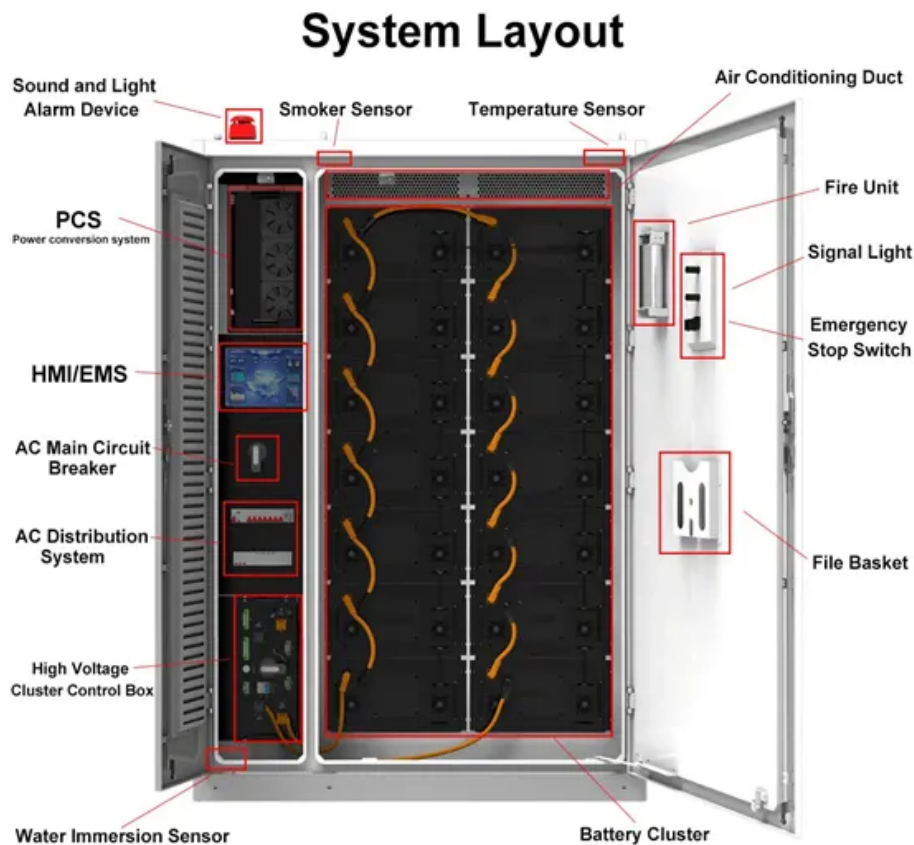


Is the wind power construction work of communication base stations going well



Overview

Under the “dual carbon” goals, enhancing the energy supply for communication base stations is crucial for energy conservation and emission reduction. An individual base station with wind/photovoltaic (PV)/storage system exhibits limited scalability, resulting in poor economy and. Abstract: Due to dramatic increase in power demand for future mobile networks (LTE/4G, 5G), hybrid- (solar-/wind-/fuel-) powered base station has become an effective solution to reduce. This reduces emissions, aligns with sustainability goals, and even opens up opportunities for carbon credits or green. If all of the channel capacity of a BS is occupied, a user cannot access this BS and must instead access another BS that is farther away. Can. Düsseldorf, 01 September 2023 - Vantage Towers, a leading tower company in Europe, has joined forces with Berlin-based wind energy start-up MOWEA to equip the first cell tower with Small wind turbines generate electricity on-site, minimizing dependence on grid power and expensive diesel fuel.

Is the wind power construction work of communication base station



Wind power construction of communication base stations

We investigate the use of wind turbine-mounted base stations (WTBSs) as a cost-effective solution for regions with high wind energy potential, since it could replace or even outperform

[Get Price](#)

New base station for wind power communication

Our study introduces a communications and power coordination planning (CPCP) model that encompasses both distributed energy resources and base stations to improve communication quality ...

18650 3.7V
RECHARGEABLE BATTERY
2000mAh



[Get Price](#)



Research on Capacity Optimization Configuration of Wind/PV

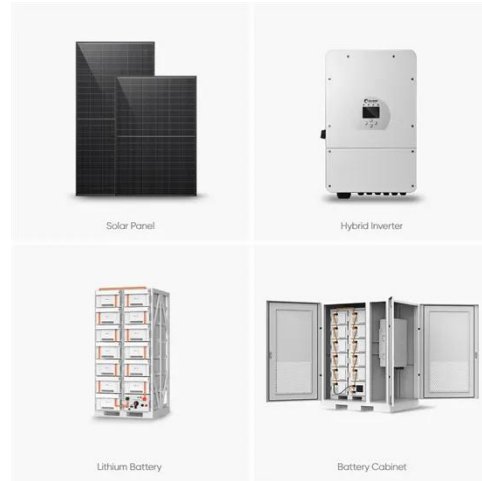
An individual base station with wind/photovoltaic (PV)/storage system exhibits limited scalability, resulting in poor economy and reliability. To address this, a collaborative power supply ...

[Get Price](#)

Communication Green Base Station Wind Power

Can low-carbon communication base stations improve local energy use? Therefore, low-carbon upgrades to communication base stations can effectively improve the economics of local energy use ...

[Get Price](#)



Construction and management of wind power for communication base ...

Can communication and power coordination planning improve communication quality of service? Our study introduces a communications and power coordination planning (CPCP) model that ...

[Get Price](#)

5G and energy internet planning for power and communication ...

Our research addresses the critical intersection of communication and power systems in the era of advanced information technologies. We highlight the strategic importance of ...

[Get Price](#)



Companies engaged in wind power generation for



communication ...

At present, wind and solar hybrid power supply systems require higher requirements for base station power. To implement new energy development, our team will continue to conduct technical research ...

[Get Price](#)

The connection between communication base station and wind ...

Discover how hybrid energy systems, combining solar, wind, and battery storage, are transforming telecom base station power, reducing costs, and boosting sustainability.



 LFP 12V 100Ah

[Get Price](#)



How to build wind power stations for communication base stations

A wind-solar hybrid and power station technology, applied in the field of communication, can solve problems such as the difficulty of power supply for communication base stations, and achieve

[Get Price](#)

Contact Us

For catalog requests, pricing, or partnerships, please visit:
<https://www.cannabiswow.es>

