

Is it better to buy a larger inverter power



Overview

If your power consumption is high, you may need a larger inverter to accommodate more devices or higher power-drawing appliances. Selecting the right inverter size ensures efficient energy conversion and prevents system strain, offering smooth operation for your energy needs. My usage, after having the house for about 2 years) is 3x what the panels supply, so I'm considering buying 20 more. Inefficiencies are in addition to the idle consumption. Whether you're setting up a solar power system, going off-grid, or simply need a backup for home appliances during a power outage, understanding how to choose the correct inverter size will make.

Is it better to buy a larger inverter power



How to Choose the Right Inverter Size for Your Solar ...

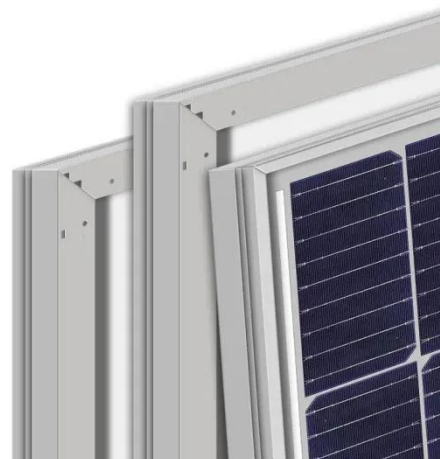
In this guide, we'll explain how to choose the best solar inverter for your needs and the key factors to consider.

[Get Price](#)

What Size Inverter Do I Need

In this guide, we'll walk you through everything you need to know to calculate the right inverter size for your specific needs, from basic considerations to advanced power calculations. Let's ...

[Get Price](#)



Inverter Sizing: Can Your Inverter Be Too Big for Your Battery Bank?

A larger inverter might allow higher power usage, leading to deeper discharges, which can stress batteries and reduce their overall life expectancy. Conversely, a suitably sized inverter ...

[Get Price](#)

Is your inverter too big? Understanding the downsides of oversizing ...

When the inverter is significantly larger than the rest of the system, the result is often higher idle consumption, deeper nightly battery discharge, increased wear, and unnecessary upfront ...

[Get Price](#)



What Happens If Your Inverter Is Too Big? Risks, Solutions & Expert

An oversized power inverter can undermine the efficiency, cost-effectiveness, and longevity of your power system. While it might seem like a "safer" choice, improper sizing leads to

...

[Get Price](#)

Does a Bigger Inverter Use More Power?

The advantage is that they can provide higher output power, making them suitable for large electrical devices or scenarios that require high power. However, larger inverters are usually ...

[Get Price](#)



Are Large Inverters Less Efficient?



Well, size does matter, but there is more to it. An inverter uses 10% more power than its appliance load due to inefficiency and standby mode requirements. Inverter efficiency increases with a higher load, ...

[Get Price](#)

Stop Oversizing: Read Efficiency Curves to Right-Size Inverters

Stop wasting money on oversized inverters. Learn to read efficiency curves to perfectly match inverter size to your load, boosting performance and system longevity.

[Get Price](#)



Is it inefficient to have a larger inverter than you need? : r/solar

Most inverters work at >90% efficiency at between 15 and 75% loads. From there, some lose efficiency at higher-percents, while some gain. Most will lose efficiency fast under 20% load, too, especially 10 ...

[Get Price](#)

Big inverters vs smaller inverters

Do you want to size for the "final" system that may require a larger inverter and eat the additional power consumption, or do you want to do it incrementally at higher \$ cost.

[Get Price](#)



Contact Us

For catalog requests, pricing, or partnerships, please visit:
<https://www.cannabiswow.es>

