

Inverter battery low voltage protection



Overview

The low voltage relay will automatically disconnect the DC power between the batteries and inverter, and/or other DC devices like lights or water heating elements. The normally open. Both our standard inverter and hybrid inverter/chargers have low voltage protections. In a hybrid inverter, you may get warning about "battery low voltage" or "battery over-discharge", and in a standard system your charge controller and inverter may show a fault or shut off due to low battery. Transistor T2 has been introduced for responding to T1's actions and also for detecting low voltage conditions. When the battery voltage falls beyond a certain low voltage threshold, the base current of T2 becomes sufficiently low such that it's no longer able to hold the relay into conduction and. However when testing the battery discharged all the way to 8V in a single night (the mains power interruption was longer than expected) Now the battery is either ruined or in sleep-mode and I cannot fix it. I have another battery but too scared to use it now. Read Full Description The LVD-35 is compact. NOTE: This product is a voltage controller, which turns on and off the output through a relay, which only acts as a switch and cannot change the voltage.

Inverter battery low voltage protection



Powerwerx Compact Low Voltage Disconnect (LVD) Battery Guard

Continually monitors battery voltage then disconnects the load when low voltage is sensed. Extends battery life by preventing over-discharge and protects equipment from operating at potentially low ...

[Get Price](#)

Low Battery and Overload Protection Circuit for Inverters

What you can do is set the inverter to switch off on battery voltage and SOC. Set your system to shut off around 10% SOC min to allow for cell imbalances at lower soc.

[Get Price](#)



General Power Inverters Troubleshooting Guide , Renogy US

With a multimeter test for DC Voltage at the Battery terminals of the Inverter to verify you are within the operating voltage range. The fault indicator, audible alarm, and system shut down will occur if the ...



[Get Price](#)

Choosing a Low Voltage Disconnect , Africa Field Systems Engineers

All inverters have some sort of LVD built-in to protect the inverter from running on too low a voltage, but often the voltage is not settable, or the voltage range is too low to properly protect your batteries.



[Get Price](#)



What are the Low Voltage and High Voltage Protection of Inverters?

This article starts from the inverter structure and explains in detail how these protection settings prevent the battery from over discharging or over charging, prolonging the battery life and ...

[Get Price](#)

Digital Low Voltage Protector Disconnect Switch Cut Off 12V Over

Users can easily set the parameter to disconnect the battery automatically when it reaches a preset voltage, thus preventing over-discharging and extending battery life.



[Get Price](#)



How to Battery Protect against Low Discharge with Inverter

What you can do is set the inverter to switch off on battery voltage and SOC. Set your system to shut off around 10% SOC min to allow for cell imbalances at lower soc.

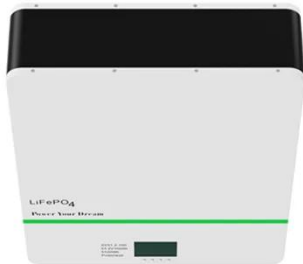
[Get Price](#)

Inverter Protection Circuit using LM324, Low voltage and Overload

There are three output connections are available, one is the point must go to the source of your MOSFETs, this must be the ground for the driving MOSFET.



[Get Price](#)



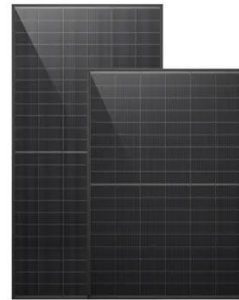
Low Battery and Overload Protection Circuit for Inverters

A very simple low battery cut-off and overload protection circuit has been explained here. The figure shows a very simple circuit set up which performs the function of an overload sensor and ...

[Get Price](#)

Powerwerx Compact Low Voltage Disconnect ...

Continually monitors battery voltage then disconnects the load when low ...

[Get Price](#)

Why is my inverter shutting off due to "battery low voltage"?

In a hybrid inverter, you may get warning about "battery low voltage" or "battery over-discharge", and in a standard system your charge controller and inverter may show a fault or shut off ...

[Get Price](#)

Battery Guard Low Voltage Protection Switch

Use our Low Voltage Battery Protection Relay Switch to temporarily disconnect your power inverter or other DC devices from your batteries. Prolong the lifespan of your expensive lead acid or lithium ...

[Get Price](#)

Contact Us

For catalog requests, pricing, or partnerships, please visit:

<https://www.cannabiswow.es>

