

How to classify LONGi photovoltaic panels into abc



Overview

ABC modules with All Back Contact technology are solar modules in which all electrical contacts are located entirely on the back of the cells. This eliminates the shading caused by front contacts, as is the case with conventional modules, which maximizes the active area and increases. Both LONGi HPBC and AIKO ABC represent cutting-edge back-contact solar technology. LONGi holds the world record at 25.4% efficiency with documented low-light advantages ideal for cloudy climates. HIBC (Hybrid Interdigitated Back-Contact) refers to a high-low temperature composite passivated back contact technology. LONGi has laid out several. Let's dissect LONGi's photovoltaic grading system through the lens of a solar installer who once confused B-grade panels with abstract art. The differences between A and B class panels extend beyond surface appearances, impacting everything from energy output to financial return. Ever wondered why. Solar Panels Grades A, B, and C (Explained) - Solar Panel Installation, Mounting, Settings, and Repair. The expensive monocrystalline panels vs. the cheaper polycrystalline or the easy-to-install thin-film solar panel may. How to choose the right solar panels for your needs EnergySage has classified all types of solar equipment into an easy-to-understand framework. Most manufacturers and distributors only sell.

How to classify LONGi photovoltaic panels into abc



Voltage range: 691.2-947.2V

>6000 cycles (100%DOD)

Rated battery capacity: 216KWH (customizable)

EMS communication: 4G/CAN/RS485

HPBC or ABC? Compare Back-Contact Solar Panel Technologies

Back-contact solar panels are changing the game. In this guide, we compare Hybrid Passivated Back Contact (HPBC) and All Back Contact (ABC) panels to help you make the smart ...

[Get Price](#)

LONGi Solar-FAQ

Modules are classified by rated current, with the information found on the attached labels. Is mixed use of LHM current levels permitted? Mixed use of LHM current levels is permitted at the same power, ...



[Get Price](#)



Understanding LONGi Solar Panel Grades: A vs B Classifications

Let's dissect LONGi's photovoltaic grading system through the lens of a solar installer who once confused B-grade panels with abstract art. The differences between A and B class panels extend ...

[Get Price](#)

Longi 500w photovoltaic panel parameters

LONGi Hi-MO 5 solar panel series implements bifacial technology, which can be extremely useful in utility-scale applications that are more suited to take advantage of the



[Get Price](#)



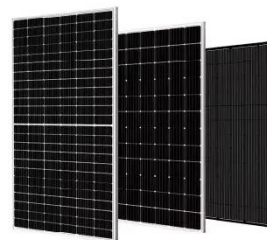
How to classify the grades of photovoltaic panels

Classification of solar panels can be achieved through several distinct criteria, including 1. technology type, 2. efficiency rating, 3. application suitability, 4. cost, and 5.

[Get Price](#)

High-efficiency Module, Longi solar module

LONGi supplies its reliable, high-performance solar modules to 6 continents and 85 countries and regions to power the world toward a low carbon future. HIBC (Hybrid Interdigitated Back-Contact) ...



[Get Price](#)

Back-Contact Solar Comparison: HPBC vs ABC Technology



Both LONGi HPBC and AIKO ABC represent cutting-edge back-contact solar technology. LONGi holds the world record at 25.4% efficiency with documented low-light advantages ideal for ...

[Get Price](#)

Solar Panels Grades A, B, and C (Explained)

The grading system goes A for the best, B for visually defective panels but meet performance benchmarks, C for visually and performatively defective solar panels, and D for broken ...

[Get Price](#)



Solar Panels Grades A, B, and C (Explained)

What Is A Grade B Solar Panel? A, B, Or C, The Grading System For Solar Panels Which Type of Solar Panel Is Best For Home use? Types of Defects Grade B solar panels have some visual defects that do not affect performance. Grade B naturally falls below grade A in this grading system. So how does Grade B stack up against the other grades? Grade A solar panels are entirely free of defects. Grade B has some visual flaws but still meets performance standards. Grade C has visual and performance See more on solvoltaics Missing: classify Must include: classify EnergySage

LONGi Solar Panels - EnergySage

EnergySage has classified all types of solar equipment into an easy-to-understand framework. The EnergySage classification system incorporates technical specifications for solar panels, inverters and ...

[Get Price](#)

LONGi Solar Panels

EnergySage has classified all types of solar equipment into an easy-to-understand framework. The EnergySage classification system incorporates technical specifications for solar panels, inverters and ...



[Get Price](#)

Contact Us

For catalog requests, pricing, or partnerships, please visit:
<https://www.cannabiswow.es>

