

How much is the annual power generation of 10 000 kw wind power



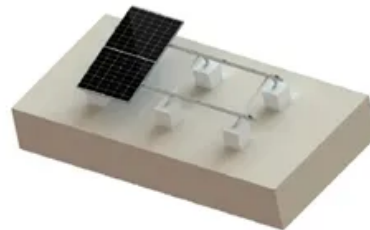
TILE ROOF SOLAR MOUNTING SYATEM



STANDING SEAM ROOF SYSTEM



ADJUSTABLE TILT FLAT ROOF SYATEM



TRIANGLE FLAT ROOF SYSTEM



Overview

A 10 kW turbine, for instance, can generate around 16,000 to 25,000 kWh annually depending on wind conditions. In one rural project I monitored, a cluster of 20 kW turbines supported the entire irrigation system for a mid-sized agricultural operation. The Annual Capacity of a Wind Turbine Calculator is designed to estimate the annual energy production (AEP) of wind turbines based on their rated power, capacity factor, and the operational hours in a year. Capacity factor typically ranges from 0. Wind energy systems reduce reliance on fossil fuels and help mitigate. They achieve approximately 1,500–2,500 annual equivalent full-load hours. Their long-term average output power reaches about 20–30 kW. Make informed decisions about wind energy investments with accurate, data-driven insights.

How much is the annual power generation of 10 000 kw wind power



Wind Turbine Power Calculator , Estimate Annual Energy Output

Calculate the potential energy output of a wind turbine based on rotor diameter and wind speed. Understand the physics of wind power generation.

[Get Price](#)

Wind Turbine Power Calculator - Don't Waste Energy potential: Estimate

The wind turbine power calculator takes into account factors like wind speed, rotor size, air density, and turbine efficiency to provide accurate power output projections.

[Get Price](#)



Wind power generation, 2025

Annual electricity generation from wind is measured in terawatt-hours (TWh) per year. This includes both onshore and offshore wind sources.

[Get Price](#)



How Much Energy Will Wind Turbine Generate?

An estimate of the annual energy output from your wind turbine, kWh/year, is the best way to determine whether a particular wind turbine and tower will produce enough electricity to meet your needs.

[Get Price](#)



Wind Energy Calculator

The wind energy calculator is one of the most practical tools for anyone curious about wind-based electricity generation. By inputting details like wind speed, air density, and rotor size, ...

[Get Price](#)

Annual Capacity Of A Wind Turbine Calculator

This example demonstrates how the calculator can be used to estimate the annual energy output of a typical wind turbine, aiding in feasibility studies and energy production assessments.

[Get Price](#)



Annual Energy Production Calculator

Enter the installed capacity and capacity factor into the calculator to determine the annual energy production. The



following formula is used to calculate the annual energy production for a given installed capacity and ...

[Get Price](#)

How Much Energy Does A Wind Turbine Produce?

Wind power has become a core pillar of the global energy transition. However, its specific generation capacity remains difficult to judge intuitively due to technical parameters and ...

[Get Price](#)



How Much Energy Does a Wind Turbine Generate

A 10 kW turbine, for instance, can generate around 16,000 to 25,000 kWh annually depending on wind conditions. In one rural project I monitored, a cluster of 20 kW turbines supported ...

[Get Price](#)

Wind Turbine Profit Calculator

How much money can you make from a wind turbine? This tool will calculate your wind turbine profit from energy generated per day. Start by inputting the

following variables; total energy generated per ...

[Get Price](#)



Contact Us

For catalog requests, pricing, or partnerships, please visit:
<https://www.cannabiswow.es>

