

How many watts does a solar return water pump inverter usually have



Overview

Summary: Inverters typically range from 150W to 15,000W depending on their application. To determine the correct solar pump inverter size, calculate the pump's running wattage and consider the starting surge, which is typically same power or a littler bigger of pump power. In this article, we guide you through the different inverter sizes. Additionally, you'll learn what appliances you can power and how you can select. A 4000 watt inverter is enough to run most 1. An AC well pump requires a lot of power to start up and run. This guide explores common wattage requirements for residential, commercial, and industrial systems while explaining how to choose the right inverter power for solar energy storage, backup systems, and off-grid. The solar pump inverter is an off-grid inverter that doesn't rely on the grid and operates independently of the load.

How many watts does a solar return water pump inverter usually ha



Can 1 hp motor run on inverter?

That means a 1 HP water pump requires at LEAST 750 watts of solar power to run, but to run effectively throughout the day a few hundred more watts should be added. Plus, an inverter always incurs a bit ...

[Get Price](#)

What Kind Of Solar Inverters Can Drive a Water Pump?

Normally, the rated power of the solar pump inverter should be slightly more than or equal to the rated power of the water pump to ensure that the pump can be operated normally.

[Get Price](#)



5 Critical Questions to Understand Solar Pump Inverters and Their

At the heart of every solar pumping system is the solar pump inverter. Its primary job is to convert the direct current (DC) electricity generated by photovoltaic (PV) panels into alternating ...

[Get Price](#)



How Solar Pump Inverters Can Efficiently Run Water Pumps Using Solar

How many solar watts does it take to run a water pump? A 1 HP water pump typically requires about 1200 watts of solar power, which equates to approximately twelve 100-watt solar panels.

[Get Price](#)



Solar Pump Inverters: The Ultimate Guide to Efficiency, Cost Savings

Solar pump inverters are the backbone of modern solar-powered water systems, offering a sustainable and cost-effective alternative to traditional grid-dependent pumps. Whether you're a ...

[Get Price](#)

The Only Inverter Size Chart You'll Ever Need

During our research, we discovered that most inverters range in size from 300 watts up to over 3000 watts. In this article, we guide you through the different inverter sizes. Additionally, you'll ...

[Get Price](#)



Solar Water Pumps: The



Ultimate Guide (Sizing, Cost & Installation)

The Vecharged Rule of Thumb: For every 100 watts of solar panel, you can typically expect to pump around 1,000 gallons of water per day to a moderate height (e.g., 20-30 feet).

[Get Price](#)

The Only Inverter Size Chart You'll Ever Need

How to Determine What Size Inverter I Need? What Are The Two Types of Power loads? Inverter Size Chart What Will A 300W Inverter Run? What Will A 500W Inverter Run? What Will A 700W Inverter Run? What Will A 1000W Inverter Run? What Will A 1500W Inverter Run? What Will A 2000W Inverter Run? What Will A 3000W Inverter Run? We have summarized the appliances that inverters from 300W to 3000W can run depending on their rated maximum power. Note to our readers: Use the above formulato determine how many appliances each inverter size can run simultaneously. See more on [climatebiz](#)



Videos of How Many Watts Does a Solar Return Water Pump Inverter ...

Watch video35:55 Solar Water Pump Full Installation & Demo o RPS Solar Pumps RPS Solar Pumps365K views Watch video8:48 How Many Solar Panels to

Entirely Run an Water Pump?
(With/Without Batteries) Renewable
Energy33.3K views8 months agoWatch
video8:04Different Types of Inverters for
Solar Power Systems Cleversolarpower
by Nick66.3K viewsWatch full
videoportablesolarexpert

What Inverter Size for Well Pump to Use?

In a 1.5 AC pump this is about 3000 watts. Add 25% to 3000 watts and you get 3750 watts. Round that off to 4000, and that is the inverter you need. For other ...

[Get Price](#)



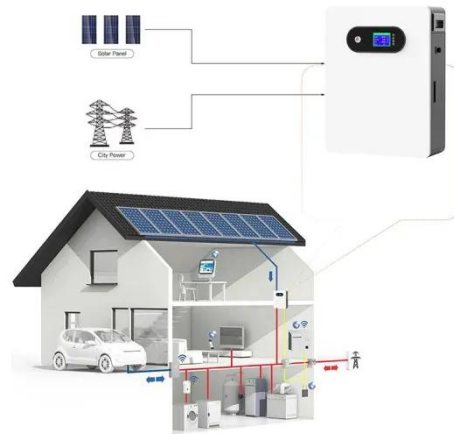
How Many Watts Does an Inverter Usually Have? A Practical Guide ...

This guide explores common wattage requirements for residential, commercial, and industrial systems while explaining how to choose the right inverter power for solar energy storage, backup systems, ...

[Get Price](#)

What Size Solar Pump Inverter Do I Need to Run a Pump?

To calculate the appropriate inverter size for your pump, follow these steps:
Determine the Running Wattage:
Multiply the pump's voltage by its current draw to find the running wattage. For ...

[Get Price](#)

What Inverter Size for Well Pump to Use?

In a 1.5 AC pump this is about 3000 watts. Add 25% to 3000 watts and you get 3750 watts. Round that off to 4000, and that is the inverter you need. For other types of well pumps you can repeat the same ...

[Get Price](#)

Contact Us

For catalog requests, pricing, or partnerships, please visit:
<https://www.cannabiswow.es>

