

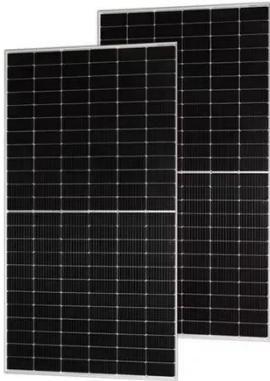
How many cells can be connected in series with a photovoltaic panel



Overview

Considering real-world applications, solar panels typically incorporate about ten to fifteen cells arranged in series to balance voltage and current effectively. To achieve such a large power, we need to connect N-number of modules in series and parallel. The modules are connected in series to increase. Calculate how many solar panels can be wired in series Wiring solar panels in series means connecting the positive terminal of one panel to the negative terminal of the next, which increases the system's voltage while maintaining the same current. You can do that one of two ways (or a hybrid of both). Typically, a string of 10 to 15 solar cells is common, yet this depends on the application and design of the solar panel system.

How many cells can be connected in series with a photovoltaic panel



Series, Parallel & Series-Parallel Connection of PV Panels

A string of six modules connected in series and six such strings connected in parallel, having a total power of 42840 W to obtain the desired maximum PV array current of 100 A and voltage of 400 V.

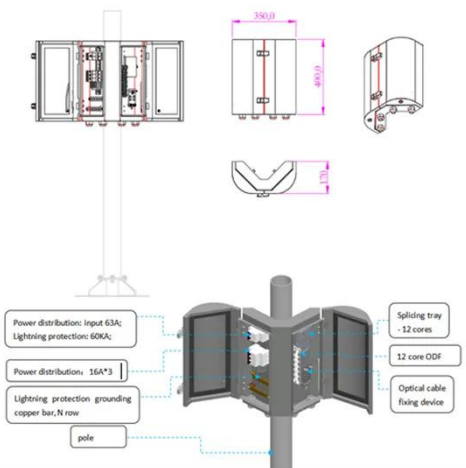
[Get Price](#)

Are solar cells connected in series or parallel

Solar cells are often connected in series to increase voltage (e.g., 36 cells for ~18V) or in parallel to boost current. Series connections are common in panels, while parallel wiring is used in arrays to ...



[Get Price](#)



How many solar cells are connected in series , NenPower

Many factors influence the ideal number of solar cells to connect in series. The application plays a pivotal role, as higher voltage requirements necessitate longer strings of cells, typically ...

[Get Price](#)

How To Wire Solar Panels In Series: Complete Guide 2025

Wiring solar panels in series means connecting the positive terminal of one panel to the negative terminal of the next panel, creating a chain that increases total voltage while maintaining the ...

[Get Price](#)



Connecting Solar Panels in Series or in Parallel?

To chain multiple photovoltaic modules -- like solar panels -- in an array, you must connect them together and to your portable power station or other balance of system. You can do ...

[Get Price](#)

How to Wire Two or More Solar Panels in Series

By connecting multiple solar panels in series, we increase the system voltage. In a solar power system, the higher the voltage and the lower the energy losses along the cables. To know the maximum ...

[Get Price](#)



Guide to Connect Solar Panels in Series - PowMr

Learn how to connect solar panels in series and calculate the maximum



number of solar panels in a series string for safe, efficient performance.

[Get Price](#)

How to connect solar panels together: Series, parallel, combo

Wondering how to connect solar panels together or even how to connect multiple solar panels together? In this guide, we'll explore three common wiring methods--series, parallel, and a ...



[Get Price](#)

 **TAX FREE**    

ENERGY STORAGE SYSTEM

Product Model
 HJ-ESS-215A(100KW/215KWh)
 HJ-ESS-115A(50KW/115KWh)

Dimensions
 1600*1280*2200mm
 1600*1200*2000mm

Rated Battery Capacity
 215KWH/115KWH

Battery Cooling Method
 Air Cooled/Liquid Cooled



Solar Panel Series vs Parallel: Which is Better? , Renogy US

Solar panels wired in series are connected in a single string, with each panel's positive terminal linked to the next panel's negative terminal. This setup increases the system's total voltage while keeping the ...

[Get Price](#)

Series Connected Solar Panels For Increased Voltage

Solar PV cells are interconnected electrically in series and parallel connections within a panel (module) to produce the desired output voltage and/or current values for that panel. Typically, ...

[Get Price](#)



Contact Us

For catalog requests, pricing, or partnerships, please visit:
<https://www.cannabiswow.es>

