

How heavy is a large photovoltaic panel



Overview

How much do solar panels weigh?

Most residential solar panels weigh between 40 and 50 pounds, while larger commercial panels usually weigh 50 to 60 pounds. This weight does not consider your other rooftop solar power system components, such as the mounting materials. Understanding these specifications is crucial for determining roof. Individual solar panels come in a lot of different shapes and sizes, but generally speaking, they're about 3 feet by 5 feet, or about 15 square feet per panel, according to Pamela Frank, vice president of Gabel Associates, an energy consulting firm. 5 square feet and weighs approximately 70 pounds. A typical system can add two to three pounds per square foot of roof area (including both panels and mounting equipment).

How heavy is a large photovoltaic panel



Heavy Sports

Bookmark Heavy for the latest sports news from the NFL, NBA & MLB. Player news, statistics, analysis and trade rumors.

[Get Price](#)

HEAVY , English meaning

heavy adjective (SOLID) thick, strong, solid, or strongly made: a heavy winter coat a heavy meal (= a large amount of solid food)

[Get Price](#)



How Big Are Solar Panels? Solar Panel Size and Weight

The average weight of a commercial solar panel is between 50 and 70 pounds. This added weight can make them more difficult to move and position, which is why they are better suited ...

[Get Price](#)

Solar panel size and weight:

everything you need to know

Much like size, solar panel weight varies by technology and brand. Most of today's best home solar panels weigh between 40 lbs and 50 lbs each, slight differences in weight can be ...

[Get Price](#)



HEAVY definition and meaning , Collins English Dictionary

Someone or something that is heavy is solid in appearance or structure, or is made of a thick material. We talk in her Belgrade flat, full of heavy old brown furniture. He was short and heavy. Put the sugar ...

[Get Price](#)

Solar Panel Weight Guide

Compared to 60- and 72-cell panels, 96-cell panels tend to have a broader weight range. So there you have it! The average solar panel weight ranges from 40 to 55 pounds, with 40 pounds ...

[Get Price](#)



HEAVY Definition & Meaning

heavy, weighty, ponderous, cumbrous, cumbersome mean having great weight. heavy implies that something has

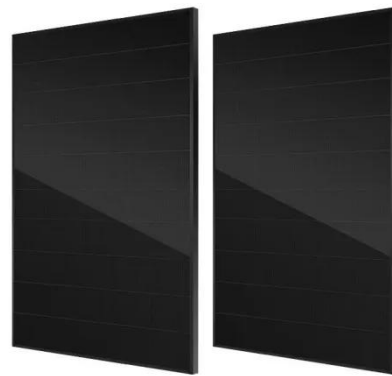
greater density or thickness than the average of its kind or class.

[Get Price](#)



The Ultimate Guide to Solar Panel Size, Weight & Wattage (2025)

Standard residential solar panels are typically around 5.8 feet long by 3.5 feet wide and weigh between 40 to 50 pounds. However, the exact dimensions depend heavily on the panel's ...



[Get Price](#)

How Heavy Is a Solar Panel - Save on Setup Today

How heavy is a solar panel? A standard solar panel weighs between 40-50 pounds, depending on the size and materials. It's manageable for installation, but it's always good to have ...

[Get Price](#)

average photovoltaic solar panel weight guide

Generally, standard residential photovoltaic panels weigh between 40 and 50 pounds (about 18 to 22 kilograms). This weight makes them manageable, but still requires careful lifting ...

[Get Price](#)



 LFP 48V 100Ah

Solar Panel Size and Weight: A 2025 Guide (with Examples)

Average Residential Panel Weight: Most panels weigh between ****40 and 50 pounds****. The "Bridge" (Total Roof Load): A standard 20-panel residential system will add ****800 to 1,000 pounds**** of static ...

[Get Price](#)

Solar Panel Size And Weight: A Comprehensive Guide

For even larger-scale commercial installations, solar panels with 96 cells are the way to go. The 96 cell solar panel is characterized by an 8 feet by 12 feet grid configuration, covers an area

[Get Price](#)



HEAVY Definition & Meaning , Dictionary

HEAVY definition: of great weight; hard to lift or carry. See examples of heavy

used in a sentence.

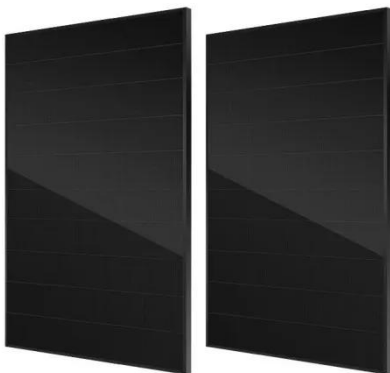
[Get Price](#)



What does heavy mean?

Heavy is a song recorded by English singer-songwriter Anne-Marie. It was released on 22 September 2017 as the third single from her debut studio album, *Speak Your Mind* (2018).

[Get Price](#)



How Big Are Solar Panels? Here's Their Typical Size and Weight

Frank said the typical weight of a solar panel is around 3 pounds per square foot. On that 25-panel example from before, that would weigh about 1,125 pounds. A whole solar system weighs about

[Get Price](#)

How Much Do Solar Panels Weigh? 1.30 - 2,608.7 lbs Chart

All individual solar panels weigh less

than 100 lbs. However, solar systems with 8kW rated capacity and above add more than 1,000 lbs to your roof. Not to worry, however.

[Get Price](#)

LPR Series 19'
Rack Mounted



Solar Panel Size And Weight: A Comprehensive Guide

Generally, standard residential photovoltaic panels weigh between 40 and 50 pounds (about 18 to 22 kilograms). This weight makes them ...

[Get Price](#)

Contact Us

For catalog requests, pricing, or partnerships, please visit:
<https://www.cannabiswow.es>

