

How big of an inverter should I choose for a half-kWh battery



Overview

Generally, it's recommended to size the inverter to 80-100% of the DC system's rated capacity. Before determine the inverter size, the most important thing is to calculate your average daily power consumption (kWh) and calculate your solar panel array size to match your power. Your inverter and battery must work seamlessly together. - A 5 kW hybrid inverter typically pairs well with a 5-10 kWh battery. Let's say you have a 6kW solar array (twenty 300-watt panels). Your inverter needs to handle that. How to determine what size inverter I need?

Before we go any further, we highly recommend that you choose a pure sine wave inverter. This type of inverter delivers high-quality electricity, similar to your utility company. This way, none of your appliances run the risk of being damaged. Now, when. Choosing the right solar inverter size is critical—and one of the most common questions: what solar inverter size do I need?

Whether you are installing a rooftop system in California, powering a remote cabin in Alberta, or sizing for a community center in Rajasthan, getting it right means. A solar inverter should closely match your solar system's output in kW—typically within 80% to 120% of your total panel capacity.

How big of an inverter should I choose for a half-kWh battery



How to Choose the Right Size Solar Inverter: Step-by-Step with Real

This guide walks you through calculating inverter size based on panel capacity, power usage, and safety margins. We use real examples from installations in Texas and Queensland to ...


[Get Price](#)

Solar Inverter Sizing Guide: How to Size Your Inverter

Learn how to properly size your solar inverter with our complete guide. Discover the optimal DC-to-AC ratio and avoid costly sizing mistakes.

[Get Price](#)



 Efficient Higher Revenue

- Max. Efficiency 97.5%
- Max. PV Input Voltage 600V
- 150% Peak Output Power
- 2 MPPT Trackers, 100% DC Input Overvoltage
- Max. PV Input Current 15A, Compatible with High Power Modules

 Intelligent Simple O&M

- IP65 Protection Degree: support outdoor installation
- Smart 1V Curve Diagnosis Function: locate PV string faults accurately and automatically detect faults
- DC & AC Type II SPD: prevent lightning damage
- Battery Reverse Connection Protection

 Flexible Abundant Configuration

- Plug & Play, EPS Switching Under 10ms
- Compatible with Lead-acid and LITHIUM Batteries
- Max. 6 Units Inverters Parallel
- ARC Function (Optional): when an arc fault is detected the inverter immediately stops operation



Battery and Inverter Sizing Guide 2025: How to Match Solar Storage

Learn how to size and pair a battery with your solar inverter in 2025. Discover key ratios, examples, and Growatt solutions for optimal solar + storage system design.

[Get Price](#)

Solar Battery Size Guide: kWh, Inverter & Runtime

How Many kWh Of Solar Battery Do I Need For My Home? 1. Start With Your Load Profile. 2. Critical Vs Full-Home. 3. From Loads To Solar Battery Size. 4. What Self-Consumption ...

[Get Price](#)



What Size Solar Inverter Do I Need? Experts Break It Down

But before you start soaking up the sun, you'll need the right inverter to match your system. This guide breaks down what size solar inverter you actually need--so your setup runs ...

[Get Price](#)

How To Size A Solar Inverter in 3 Easy Steps

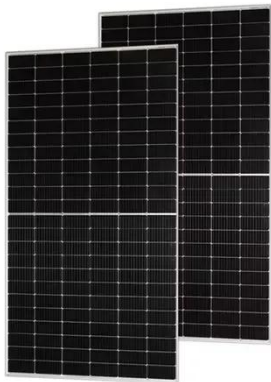
Choose an inverter that has a surge watt rating equal to or greater than this value. As for voltage drop, check the wire length between your solar panels and the batteries. If the wire length is long, you may ...

[Get Price](#)



Solar inverter size: Calculate the right size for your inverter

Most UK homes need at least a 5 kW inverter. While 3.68 kW is common,



larger homes or those with batteries benefit from a 5 kW+ system.

[Get Price](#)

The Only Inverter Size Chart You'll Ever Need

This guide walks you through calculating inverter size based on panel capacity, power usage, and safety margins. We use real examples from ...

[Get Price](#)



ENERGY STORAGE SYSTEM

Product Model
HJ-ESS-215A(100KW/215KWh)
HJ-ESS-115A(50KW 115KWh)

Dimensions
1600*1280*2200mm
1600*1200*2000mm

Rated Battery Capacity
215KWH/115KWH

Battery Cooling Method
Air Cooled/Liquid Cooled





The Only Inverter Size Chart You'll Ever Need

We have created a comprehensive inverter size chart to help you select the correct inverter to power your appliances.

[Get Price](#)

Inverter Size Calculator - self2solar

Choosing the right inverter size is essential for a reliable and efficient solar power system. Our Inverter Size

Calculator simplifies this task by accurately estimating the recommended

...

[Get Price](#)



What Size Inverter Do You Need? A Complete Guide for Home, RV

Choosing the right inverter size is crucial--too small, and your appliances won't work; too large, and you'll waste money. This guide will help you determine the ideal inverter size for your

...

[Get Price](#)

Contact Us

For catalog requests, pricing, or partnerships, please visit:
<https://www.cannabiswow.es>

