

# How big a battery can a 300w 36v solar panel charge



## Overview

---

A 300W solar panel can indeed charge a 200Ah battery, but several factors influence how effectively it does so: **Daily Output:** With ideal conditions, a 300W panel generates about 1500Wh per day. **Battery Requirement:** A 200Ah battery requires 2400Wh to be fully charged. With numerous factors to consider, such as battery capacity, charging time, sunlight availability, and system efficiency, selecting an undersized or oversized panel can lead to frustrating. A 300-watt solar panel usually generates around 1,200 watt-hours per day under ideal conditions. **Inverter:** The inverter changes direct current (DC) from the solar panels to alternating current (AC), which most household appliances require. This involves taking into account several variables including the amount of electricity used daily, available sunlight hours per day in your area, and peak sun hours per. Charging a 36V lithium battery requires the right combination of components to create an efficient solar power system. Each part plays a critical role in managing energy production and storage. A solar panel or series of panels must output at least 36V to charge a 36V lithium battery.

## How big a battery can a 300w 36v solar panel charge

---



### Careers , Bjarke Ingels Group

BIG has grown globally since 2005, with 60+ buildings in 10+ countries. Join our 700+ person team shaping the future of architecture and design challenges.

[Get Price](#)

### BIG HQ , Bjarke Ingels Group

At the foot of BIG HQ, BIG's Landscape team has transformed a former parking area into a 1,500 m2 public park and promenade, inspired by the sandy beaches and the coastal forests of Denmark.

[Get Price](#)



### How to Properly Size Solar Panels for Your 36V Lithium Battery

For a 720Wh (36V, 20Ah) battery, panels capable of generating at least 240W in three peak sunlight hours are ideal. Using larger panels shortens charging times. Back when I built an off ...

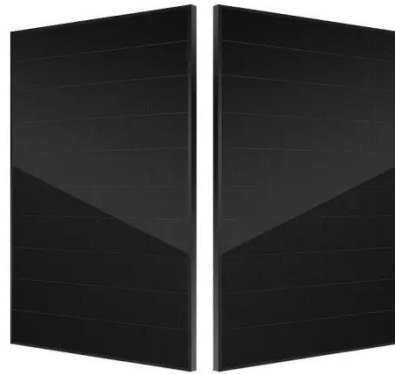
[Get Price](#)



## BIG , Bjarke Ingels Group

BIG has grown organically over the last two decades from a founder, to a family, to a force of 700. Our latest transformation is the BIG LEAP: Bjarke Ingels Group of Landscape, ...

[Get Price](#)



## People , Bjarke Ingels Group

Meet the team at Bjarke Ingels Group (BIG). Explore our partners, architects, and specialists shaping the future of architecture and design.

[Get Price](#)

## What Size Battery for 300W Solar Panel: Myths and Facts

Learn what size battery is ideal for a 300W solar panel, debunk common myths, and find answers to frequently asked questions.

[Get Price](#)



## What Size Solar Panel is Needed to Charge a 36v Battery

To help you navigate this process, this article will walk you through



understanding your battery's energy needs, calculating the required solar panel size based on various factors, and ...

[Get Price](#)

---

## What Size Charge Controller For a 300 Watt Solar Panel?

$300 \text{ watts} / 12\text{V} = 25 \text{ amps} + 20\% = 30$ . You need a 30 amp charge controller for this system. Our choice is the Renogy 12V/24V 30A MPPT Solar Controller. This controller works with 12 and 24V ...



[Get Price](#)



## What Size Battery For 300w Solar Panel?

In general, most small scale solar systems require 12V batteries, meaning that a 300W solar panel will likely need a 24V battery bank or two 12V batteries connected together in series.

[Get Price](#)

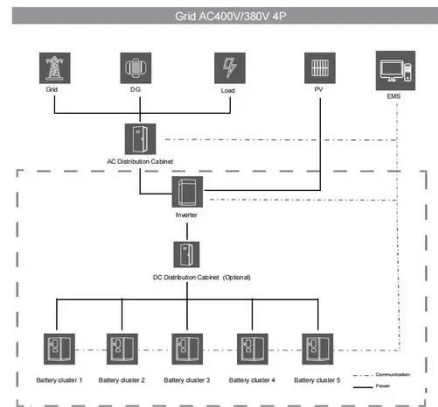
---

## How Many Solar Panels Needed to Charge 300Ah Lithium Battery

When planning to power a 300Ah lithium

battery using solar panels, several crucial factors must be taken into account to ensure efficient and effective charging. Understanding these ...

[Get Price](#)



## What Size Solar Panel Is Needed To Charge a 36V Battery?

To calculate the required solar panel size for charging a 36V battery, consider the battery capacity, desired charging time, solar panel efficiency, and available sunlight hours in your location.

[Get Price](#)

## One High Line , Bjarke Ingels Group

Bjarke Ingels - Founder & Creative Director, BIG The façade design is inspired by the punched windows seen in the historic warehouses of the Meatpacking and West Chelsea neighborhoods.



[Get Price](#)

## How many batteries do I need for a 300 watt solar panel

So, in conclusion, for a 300 watt solar panel, you would need at least one 12V battery with a minimum capacity of 25 amp-hours to ensure efficient energy storage.

[Get Price](#)



---

## WeGrow NYC , Bjarke Ingels Group

Flexible lighting systems designed by BIG and manufactured by Italian Artemide create ambience effects that form comfortable, natural lighting throughout the school day.

[Get Price](#)



---

## BIG , Bjarke Ingels Group

BIG (Bjarke Ingels Group) is a multidisciplinary design firm specializing in architecture, engineering, and planning with a focus on innovative and sustainable projects.

[Get Price](#)



---

## Hamburg State Opera , Bjarke Ingels Group

Shaped by the movement of the water, the surrounding park is designed by BIG Landscape and manages storm surges

through sloping terraces, vegetated dunes, and wetland gardens that slow ...

[Get Price](#)



## Jinji Lake Pavilion , Bjarke Ingels Group

Like a little sister to the Suzhou Museum of Contemporary Art, the Jinji Lake Pavilion seeks to reimagine the future architecture and landscape of the Lake District rooted in the rich heritage of Suzhou's ...

[Get Price](#)

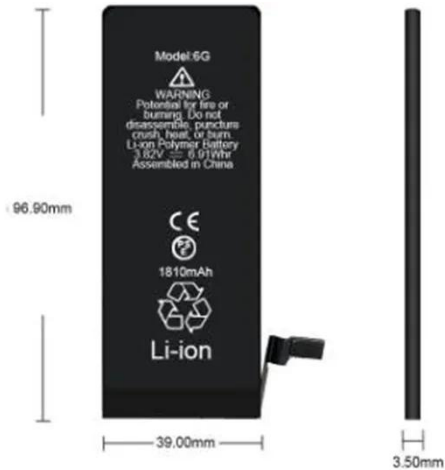
## CityWave , Bjarke Ingels Group

Designed by BIG-Bjarke Ingels Group with Atelier Verticale, CityWave is constructed on the last two plots of the CityLife masterplan, a major new business district in a prestigious area of Milan, within ...

[Get Price](#)



## How Many Batteries for 300 Watt Solar Panel: A Complete Guide to ...



To determine the number of batteries needed for a 300-watt solar panel, consider your daily energy intake and the battery capacity. Generally, you may need at least two 12-volt batteries ...

[Get Price](#)

## Solar Panel Size Calculator - Charge Your Battery In Desired Hours

Use our solar panel size calculator to find out the ideal solar panel size to charge your lead acid or lithium battery of any capacity and voltage. For example, 50ah, 100ah, 200ah, 120ah.



[Get Price](#)

## Contact Us

For catalog requests, pricing, or partnerships, please visit:  
<https://www.cannabismow.es>

