

# Hanwha 580 photovoltaic panel parameter table



## Hanwha 580 photovoltaic panel parameter table

---



### Installation and operation manual

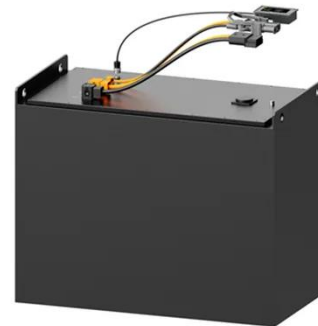
The loads in the table are related to the mechanical stability of the solar modules. The mechanical stability of the mounting system including clamps has to be evaluated by the system supplier.

[Get Price](#)

---

### Q.PEAK DUO XL-G11.2 580 Solar Panel Information (Hanwha Q ...

We do our best to provide information such as the Q.PEAK DUO XL-G11.2 580 panel dimensions, datasheet, warranty information, wattage and more wherever possible.



[Get Price](#)

---



### Q.PEAK DUO XL-G11 SERIES

\*Standard terms of guarantee for the 5 PV companies with the highest production capacity in 2021 (February 2021) Typical module performance under low irradiance conditions in comparison to STC ...

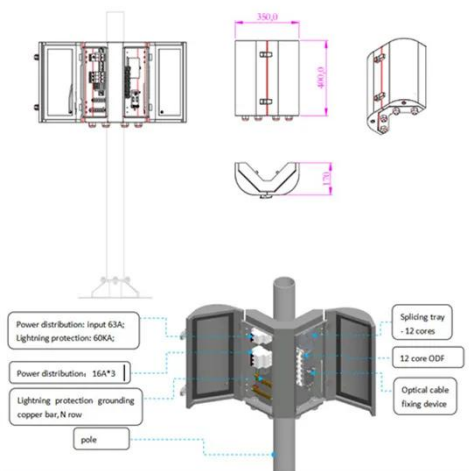
[Get Price](#)

---

## Hanwha Q Cells 580w Solar Panels

Hanwha Q cells 580w mono solar panel offers 182mm cell size, 4mm<sup>2</sup> solar cable, and IP68 junction box. Perfect for photovoltaic modules with 585w-590w power., Alibaba .

[Get Price](#)



## HY-DH156P8 580-600W 35F-EN-Ver 2

Specifications included in this datasheet are subject to change without notice.

[Get Price](#)

## 580w photovoltaic panel technical parameters

This 580Wp / NBJD580. 144 TOPCon half-cell bifacial double glass solar panel designed for large free-field photovoltaic systems, optimized for long-term reliability and performance.

[Get Price](#)



## 580 Photovoltaic panel parameters

The extraction of photovoltaic (PV) panels from remote sensing images is of great significance for estimating the



power generation of solar photovoltaic systems and

[Get Price](#)

---

## 580 Photovoltaic panel specifications and dimensions

The JA Solar JAM72D40-580/MB is a high-efficiency bifacial solar panel featuring monocrystalline N-type cells and half-cut cell technology. Designed for robustness and reliability, this panel offers ...

[Get Price](#)



---

## 182 Series 560-580W

AMPHENOLH4/MC4 connector  
4.0mm<sup>2</sup>,300mm PV CABLE, length can be customized Diameter 25mm,speed 23m/s 12 30

[Get Price](#)



---

## Contact Us

For catalog requests, pricing, or partnerships, please visit:  
<https://www.cannabiswow.es>

