

Communication base station inverter layout is distributed hybrid power supply



Overview

This research paper presents the results of the implementation of solar hybrid power supply system at telecommunication base tower to reduce the fuel consumption. This research paper presents the results of the implementation of solar hybrid power supply system at telecommunication base tower to reduce the fuel consumption. Hybrid inverters adeptly manage multiple energy inputs, including solar photovoltaic (PV) arrays, battery banks, the utility grid (if available), and backup generators. This capability is paramount for BTS shelters, where power reliability is non-negotiable. They optimize the use of solar energy. Communication Base Station Inverter Dec 14, – Power conversion and adaptation: The inverter converts DC power (such as batteries or solar panels) into AC power to adapt to the power needs of various communication equipment. Stable, well-established, efficient and intelligent. So, how exactly are hybrid systems revolutionizing energy for telecom infrastructure?

What Are Hybrid Energy Systems?

A hybrid energy system integrates multiple energy. As previously explained, the conventional BTS HPS has the capability to connect and disconnect from the electrical grid, according to measuring shortage. where V_c is the initial capital cost of the system [7], which depends on the nominal power of wind turbines (P_{wn}), the nominal power of the PV.

Communication base station inverter layout is distributed hybrid po



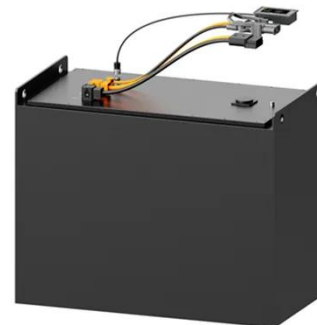
Communication Base Station Inverter Solution Project Overview

Communication Base Station Inverter Dec 14, & ensp;& #;& ensp;Power conversion and adaptation: The inverter converts DC power (such as batteries or solar panels) into AC power to adapt to the power ...

[Get Price](#)

(PDF) Reliability and Economic Assessment of Integrated Distributed

The results demonstrate that system architecture combining a utility grid with battery energy storage and solar PV offers the most cost-effective option. The system architecture, ...



[Get Price](#)



Hybrid Inverter Selection for BTS Shelters: Specs That Matter

Discover essential specifications for selecting hybrid inverters for BTS shelters and telecom towers. Learn how to ensure reliable, efficient, and scalable power solutions for remote base ...

[Get Price](#)

The Role of Hybrid Energy Systems in Powering Telecom Base Stations

Discover how hybrid energy systems, combining solar, wind, and battery storage, are transforming telecom base station power, reducing costs, and boosting sustainability.



[Get Price](#)

114KWh ESS



ISO 9001 ISO 14001 PICC RoHS CE MSDS UN38.3 UK CA IEC

Communication Base Station Smart Hybrid PV Power Supply

...

The Telecom Base Station Intelligent Grid-PV Hybrid Power Supply System helps telecom operators to achieve "carbon reduction, energy saving" for telecom base stations and machine rooms.

[Get Price](#)

Communication base station inverter layout is distributed hybrid power

The wind-solar-diesel hybrid power supply system of the communication base station is composed of a wind turbine, a solar cell module, an integrated controller for hybrid energy



[Get Price](#)

Reliability and Economic



Assessment of Integrated Distributed Hybrid

This study evaluates the reliability and economic aspects of three hybrid system configurations aimed at providing an uninterrupted power supply to base transceiver stations (BTS) ...

[Get Price](#)

COMMUNICATION BASE STATION HYBRID SYSTEM REDEFINING ...

This guide outlines the design considerations for a 48V 100Ah LiFePO4 battery pack, highlighting its technical advantages, key design elements, and applications in telecom base stations. [pdf]

[Get Price](#)



Communication base station inverter user distribution

Analogous to traditional distribution networks, the operation of distribution systems incorporating 5G communication base stations must adhere to active and reactive power flow constraints.

[Get Price](#)

Hybrid Power Supply System for Telecommunication Base

Station

This research paper presents the results of the implementation of solar hybrid power supply system at telecommunication base tower to reduce the fuel consumptio

[Get Price](#)



Contact Us

For catalog requests, pricing, or partnerships, please visit:
<https://www.cannabiswow.es>

