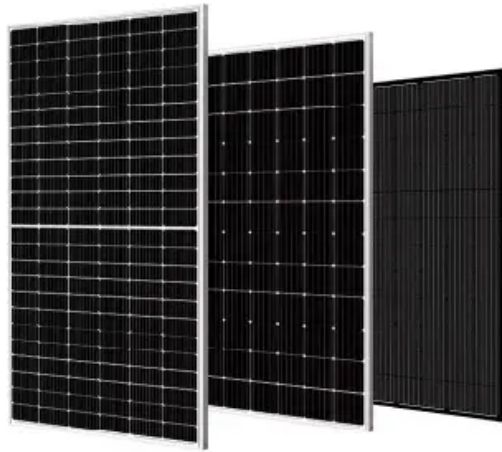


30kW System Integration for Gymnasium Server Racks



30kW System Integration for Gymnasium Server Racks



Technical Article

The ever-increasing power density has also far exceeded the processing capabilities of most old facilities. In previous years, each rack in a data center was designed for 6kW power density. ...

[Get Price](#)

Install In-rack or In-row Cooling

To address this problem, air conditioning systems can be brought closer to servers by placing them within rows of server racks or by integrating them with individual racks.



[Get Price](#)



SMART SOLUTIONS REFERENCE SUMMARY

SMART SOLUTIONS REFERENCE SUMMARY Solutions Design 30kW 6 Racks with Containment Performance Highlights SmartAisle™ technologies result in a superior PUE performance and ...

[Get Price](#)

Data Center Rack Integration Solutions , Flex

Deploy custom data center rack integration solutions at cloud scale to meet your business requirements and technical specifications.

[Get Price](#)



kW per Rack Explained: Optimize Colocation Power & Costs

Optimizing kW per rack can lower costs, improve sustainability, and ensure reliable performance. This guide explains why kW/rack matters, how to calculate it, and best practices for ...

[Get Price](#)

Rack Integration

Sanmina offers turnkey product design for Rack Scale Storage, Servers and High Performance Computing Products: processor design, enclosures, functional testing and product certification.

[Get Price](#)



Mini Data Center Server Rack with Integrated Side Cooler DX or ...



Mini data centers individually offer cooling up to 30kW, and are scalable to hundreds of units. They are appropriate for high density server needs exceeding 10kW, including container data centers, small ...

[Get Price](#)

Rack Integration Services

Optimized rack-level solutions for your unique requirements. From design to deployment and support, our expertise and capabilities extend across all phases of data center rack integration.



[Get Price](#)



Data Center Rack Power Costs: A Condensed Analysis

While a standard rack uses 7-10 kW, an AI-capable rack can demand 30 kW to over 100 kW, with an average of 60 kW+ in dedicated AI facilities. This article provides a condensed analysis ...

[Get Price](#)

Contact Us

For catalog requests, pricing, or partnerships, please visit:
<https://www.cannabiswow.es>

