

# 24v inverter commonly used MOS



## Overview

---

The BSS138 is the most common N-channel enhancement MOSFET produced using ON Semiconductor's proprietary based on high cell density and DMOS technology, which is used by many electronic production firms, designers and hobbyist. So here we decide to make a consolidated list of popular MOSFETs which can help in selecting the right MOSFET for your application. So, if you are building some power electronics circuit and thinking about how to choose the right MOSFET for your specific application, here is a list of popular. In common with all power semiconductor devices, power MOSFETs have their own technical strengths, weaknesses and subtleties, which need to be properly understood if the designer is to avoid reliability issues. It is commonly used in various applications, such as power backup systems, solar power systems, and industrial power supply systems. ( $V_{OH} = V_{DD}$  (Good!)  $V_{IN} \approx V_{DD}$  NMOS conducting PMOS open ckt. It is considered one of the most crucial electronic devices in bringing about the modern electronics revolution. This semiconducting switch.

## 24v inverter commonly used MOS

---



### Chapter 4 MOS Inverters

4.1 Introduction ge-controlled resistor. This basic property can be used to realize digital circuit using MOS transistors. In this chapter, we discuss the realization of various types of MOS inverters. The ...

[Get Price](#)

---

### Designing with power MOSFETs

In this application note some of the most common dos and don'ts of using power MOSFETs are discussed. The objective is to help the system designer understand how to use these devices ...



[Get Price](#)

---



### MOSFET inverter: a comprehensive analysis and purchase guide

This article will explore the basic concept of mosfet inverter, working principle, advantages and how to choose the right MOSFET inverter, in addition to the comparison of MOSFET ...

[Get Price](#)

---

## Comparing the Best MOSFETs for Power Electronics

Because we care so much about helping engineers get access to the perfect components for their products, we've compiled a list of the best MOSFETs for a range of power electronics ...

[Get Price](#)



## Popular MOSFETs frequently used in power electronics designs

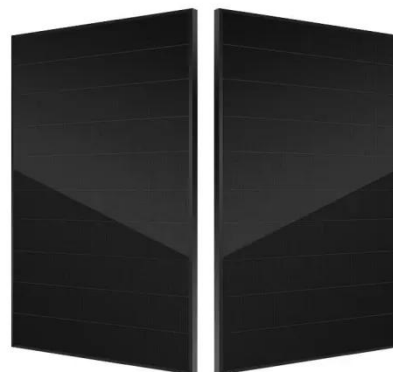
So, if you are building some power electronics circuit and thinking about how to choose the right MOSFET for your specific application, here is a list of popular through-hole and surface ...

[Get Price](#)

## Mosfet-based circuit diagram for an inverter

Learn how to design an inverter circuit diagram using MOSFETs for efficient power conversion.

[Get Price](#)



## Selecting the Right MOSFET for High-Power Applications

SiC MOSFETs are the preferred choice for solar inverters and wind turbine systems

due to their high efficiency at elevated voltages. These devices reduce power losses, increasing overall ...

[Get Price](#)



## MOS Inverters

o CMOS inverter - most used, smallest, lowest power dissipation, best inverter characteristics.

[Get Price](#)



## Step-By Step Guide To Select Power MOSFETs

Power MOSFET is the most used power semiconductor device in the world. It is an enhanced version of a regular MOSFET that is capable of handling significantly higher power levels ...

[Get Price](#)

## Contact Us

For catalog requests, pricing, or partnerships, please visit:  
<https://www.cannabismow.es>

