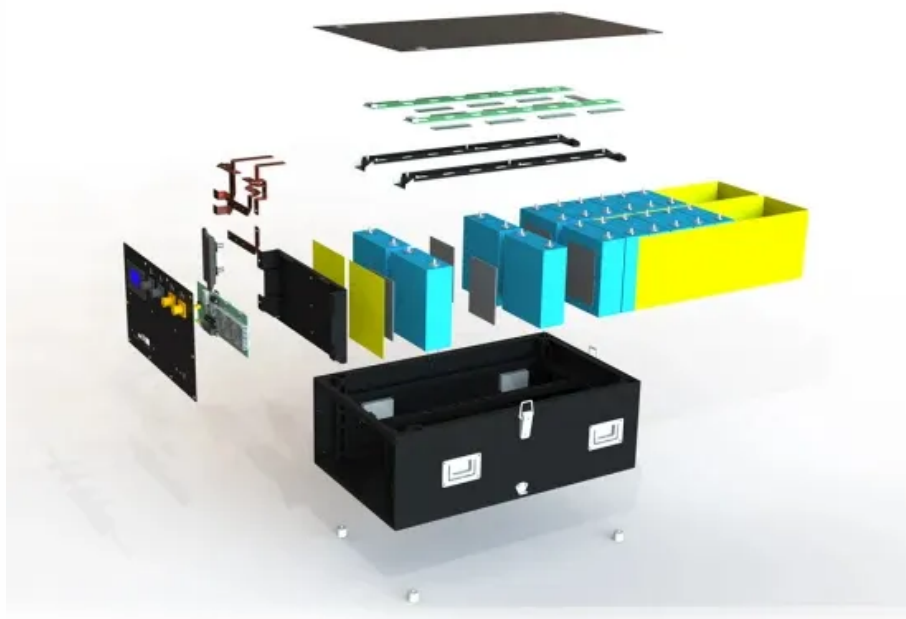


12v 30a lithium battery can be used with inverter



Overview

Summary: A 12V 30Ah lithium battery can work with inverters for small to medium power needs. This guide explores compatibility, applications, and optimization tips for renewable energy users, RV owners, and off-grid enthusiasts. Lithium batteries require specific inverter features: Voltage Matching Must support your battery bank's. You install a new backup power system, everything looks good—the lithium battery is at 100%, the inverter is a solid brand, the specs match. Then you go to test it under a real load, and click. It's a. Lithium-ion batteries are now widely used and have revolutionized energy storage, particularly for inverters.

12v 30a lithium battery can be used with inverter



Lithium Battery for Inverter: Pros, Specs, and Tips

Can I replace my lead-acid battery with lithium in my inverter system? Yes, but you must ensure your inverter and charger are compatible with lithium charging profiles.

[Get Price](#)

Compatibility of Lithium-Ion Batteries with Existing ...

In summary, installing a lithium-ion battery with an existing ...

[Get Price](#)



How to Choose the Right Inverter for a Lithium Battery System

Choosing the wrong inverter for lithium battery use can lead to inefficiency, system instability, or even battery damage. Unlike lead-acid systems, lithium batteries operate across a different voltage curve, ...

[Get Price](#)

Compatibility of Lithium-Ion Batteries with Existing Inverters

In summary, installing a lithium-ion battery with an existing inverter is not only feasible but also highly beneficial. From improved efficiency and performance to enhanced energy storage and reduced ...



[Get Price](#)



The Ultimate Guide to Matching Your Lithium Battery and Inverter

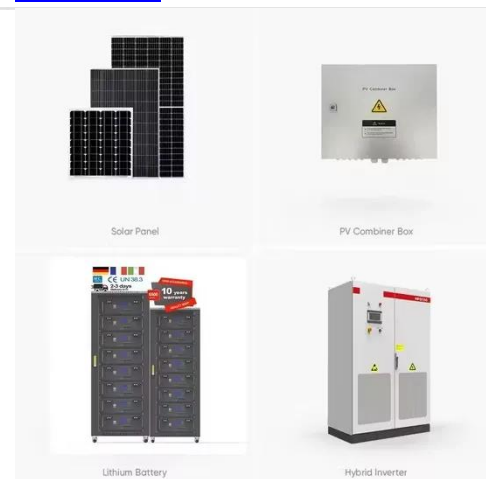
Conclusion: With that battery, you can run a 2500W inverter with a healthy safety margin. Its high cycle life and incredibly flat voltage curve mean it's a solid foundation for a powerful system.

[Get Price](#)

Can a 12V 30Ah Lithium Battery Power Your Inverter? A Practical Guide

Summary: A 12V 30Ah lithium battery can work with inverters for small to medium power needs. This guide explores compatibility, applications, and optimization tips for renewable energy users, RV ...

[Get Price](#)



Can Lithium Batteries Work With Any Type of Inverter?



The short answer is no - proper inverter matching is crucial for optimal performance and safety. Let's examine the key compatibility factors for lithium battery and LiFePO4 battery systems.

[Get Price](#)

How Long Will A 12v Battery Last With An Inverter? Calculator

A 12 volt 50Ah lithium iron phosphate (LiFP04) battery with regular depth of discharge (DoD) of 80% will run a fully-loaded 1500 watt inverter for 13 minutes. The calculation incorporates ...

[Get Price](#)



12V Lithium Battery to Inverter: Key Applications and Benefits for

Whether you're powering a tiny home, a solar farm, or an adventure-ready RV, the combination of a 12V lithium battery and an inverter is like having a silent, reliable partner that never lets you down.

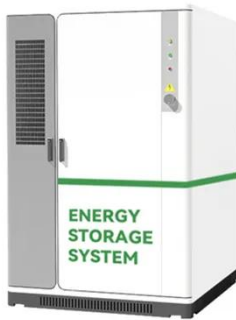
[Get Price](#)

Best Inverters for Lithium Batteries to Power Your Off-

Grid and ...

Below is a comparison table summarizing some top-rated inverters and inverter-inclusive setups that work well with lithium batteries for various applications including RVs, solar systems, and ...

[Get Price](#)



How Many Batteries for a 3000W Inverter? Complete Guide

In this article, we'll break down the exact battery requirements for a 3000W inverter, compare lithium vs lead-acid options, and guide you step by step with real calculations.

[Get Price](#)

Contact Us

For catalog requests, pricing, or partnerships, please visit:
<https://www.cannabiswow.es>

